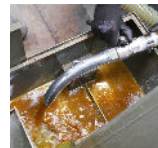
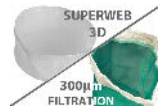




TC 100 MPI - OIL AND CHIPS



METALWORKING



- ✓ Tangential suction inlet with integrated separation cyclone
- ✓ PPL filter for chips separation
- ✓ Floating device to stop the suction when container is full
- ✓ Reduced downtime of machine tools
- ✓ Submerged pump for the discharge of the vacuumed liquid
- ✓ Grid for chips vacuuming
- ✓ Simultaneous operation of liquids vacuuming and discharge
- ✓ Possibility of recycling oils and emulsions
- ✓ Reduction of disposal costs due to used oils
- ✓ Reduction of machineries cleaning times

SUCTION UNIT

Voltage	V - Hz	115 - 60 1~
Power	HP (kW)	3.0 (2.3)
Max water lift	inH2O (mmH2O)	80.9 (2055)
Max air flow	CFM (m3/h)	282.5 (480)
Noise level (EN ISO 3744)	dB(A)	78

FILTER UNIT

Filter Type	3D SuperWeb + PPL
Media - Filtration	Polypropilene - 300µm

COLLECTION UNIT

Discharge system		Pump
Liquids capacity	gal (L)	26 (100)
Solids capacity	gal (L)	10.6 (40)
Discharge speed	gal/min (lt/min)	42 (160)
Floating device		

SIZE

Dimensions	in (cm) WxLxH	26x26x49 (67x66x125)
Weight	lbs (kg)	154 (70)



SUCTION UNIT

The suction is provided by two by-pass motors, using carbon brushes, operated by independent switches and placed inside a sturdy steel casing, filled with soundproofing material.



FILTER UNIT

A floating device stops the suction whenever the liquid in the container reaches the maximum level and prevents overflowing.

A propylene filter for liquids is installed upstream. This filter guarantees the efficient filtration of the vacuumed oil; an additional plastic foam filter prevents most of the liquid mist from reaching the motor.

SUPERWEB 3D primary filter is a special and hydro-oleophobic filter which guarantees the maximum oil separation while protecting the engine from oily mists and dust.



COLLECTION UNIT

Forklift intakes for easy discharge.

After vacuuming, metal chips are separated from oils by a detachable sieve grid and are then collected inside a high capacity collection tank.

Thanks to an electric pump, it is possible to dispose quickly of the vacuumed liquid or to re-insert it rapidly into the machinery

OPTIONALS

- ✓ ABS ACCESSORY BASKET AND DOUBLEBEND HOLDER
- ✓ STAINLESS STEEL SIEVE GRID
- ✓ OIL & WATER PROOF CARTRIDGE