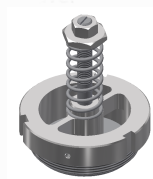




CV126 - SUCTION UNIT



- ✓ Side channel blower motor , powerful and silent, totally maintenance free, suitable for continuous duty
- ✓ Pressure relief valve for motor protection
- ✓ Low noise level
- ✓ Suitable for continuous use 24/7
- ✓ Designed to ensure maximum efficiency according to customer requirements
- ✓ Increased hygiene and cleanliness during and after production cycles
- ✓ High level of automation



SUCTION UNIT

Voltage	V - Hz	400 60 3-
Power	HP	11.5
Max waterlift	inH2O	106.3
Max air flow	CFM	497.3
Suction inlet	mm	70
Noise level (EN ISO 3744)	dB(A)	75
Loc/Rem		Included



VOLUME

Dimensions	in	25.2x25.9x54.7
Weight	lb	375



SUCTION UNIT

The suction unit is a side channel blower, with impeller fixed directly on the motor shaft and electronically balanced. Since it does not require any maintenance, it is suitable for continuous service (24/7), is highly silent and guarantees high performance. A vacuum limiting valve, adjusted to the maximum continuous working point, guarantees protection to the motor in case of heavy duty, continuous and/or heavy duty service (e.g. clogged filter, obstructions in the suction system, etc.)

The suction unit is contained in a powder-coated steel frame, fixed to the floor, which protects it, soundproofs it and prevents accidental contact with the operators. Integrated in the cover is the high protection electrical panel (IP55 or 65), complete with start/stop controls (direct up to 7.37 HP, delta star from 10 HP), and a LOCAL / REMOTE selector switch that allows to manage the motor switching on and off remotely (via connection to 24V low voltage remote microswitches) or directly on board the panel. Other integrations for the management of further external functions and components (valve control, level probes, inverter / frequency variator etc.) are available on request



OPTIONALS

- ✓ ABSOLUTE HEPA FILTER /H14
- ✓ ATEX CERTIFICATION
- ✓ IP65 ELECTRIC PROTECTION
- ✓ INVERTER
- ✓ ADDITIONAL SILENCER
- ✓ CONTROL PANEL WITH PLC FOR MANAGEMENT OF EXTERNAL DEVICES (FILTER CLEANING CONTROL, PROBES, VALVES, ETC)